

CE
0120



NEW
GBR System Guided Bone Regeneration



GBR System

Guided Bone Regeneration

Guided Bone Regeneration (GBR) is a procedure that regenerates missing bone prior to the placement of dental implants. This can be accomplished by using bone grafts, biocompatible membranes, and fixation screws.

Bone Grafts may be autologous bone harvested from the patient's own body, allograft bone, or synthetic materials.

Jeil GBR System offers options for customized kit configuration. Doctors may choose necessary screws, meshes, and instruments in a block.

Guided Bone Regeneration using Titanium Mesh



1

Make an incision & Expose the desired area.



2

Drill several bleeding holes on the bone, in order to help bone regeneration.



3

Fill the bone graft on the desired area.



4

Using the mesh cutter, cut the 0.1mm thick titanium mesh to fit desired area.



5

Bend & Position the titanium mesh on the destination.



6

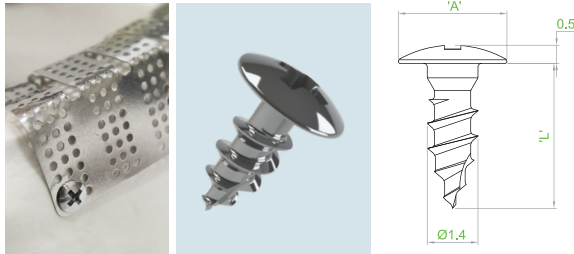
Fix the titanium mesh with self drilling \varnothing 1.4 micro screws.

NEW GBR SYSTEM

Helps doctors to perform better & easier guided bone regeneration operation with its unique features and user-friendly design.

Wide Head Screw

Fits better to GBR mesh and membrane thanks to the wider head.



Unit : (mm)

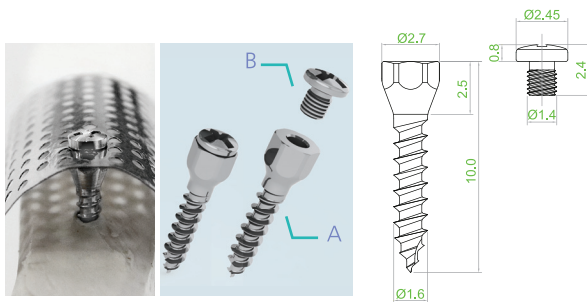
Code	Head Diameter	Thread Diameter	Screw Length
14-AT-003G	Ø3.0	Ø1.4	3.0
14-AT-004G			4.0
14-AT-005G			5.0

Instrument	Description
113-MC-202	Micro Driver Shaft (for angle)
112-MC-201	Micro Drill Bit for pre-drilling, Ø1.0mm, 8mm stop
113-MC-101	Micro Screwdriver Shaft for Screwdriver Handle
111-010	Screwdriver Handle
112-083	Screw Block

*Consider pre-drilling in certain cases.

Tenting Screw

Creates and secures the space for bone graft.



Unit : (mm)

Code	Head Diameter	Thread Diameter	Screw Length
16-TT-010(A+B)	Ø2.7	Ø1.6	10
Cap Screw(B)	Ø2.45	Ø1.4	1.6

Instrument	Description
113-MJ-103	Hexa Driver Shaft for Screwdriver Handle
113-MC-101	Micro Driver Shaft for Screwdriver Handle
111-010	Screwdriver Handle
112-083	Screw Block

*Consider pre-drilling in certain cases.

J-Tac

Tacking system for stabilizing a membrane on maxilla / mandible. Its dome-shaped head and barbed pin keep the membrane anchored on the bone after operation. Straight or angled J-Tac shafts in conjunction with screwdriver body with silicone cap can pick-up and place the J-Tacs.



JT-CL-030
(Length: 3mm, 5pcs / pack)

113-JT-101

113-JT-103

JT-CL-040
(Length: 4mm, 5pcs / pack)

TITANIUM MESH PLATE

Efficiently forms the space to protect the graft.

Multiple pores on the mesh not only help blood supply but also minimize soft tissue exposures.

Fixation Hole Mesh

Can be used as an alternative to a membrane, and also enables simultaneous GBR with dental Implant.

Doctors can easily remove unnecessary edges.



Unit : (mm)

Code	Size	Thickness	Pore diameter	Fixation hole diameter	Color
12-GM-P01	16.6 x 10	0.15	Ø0.8	Ø3.1	Silver
12-GM-P02	28 x 10				

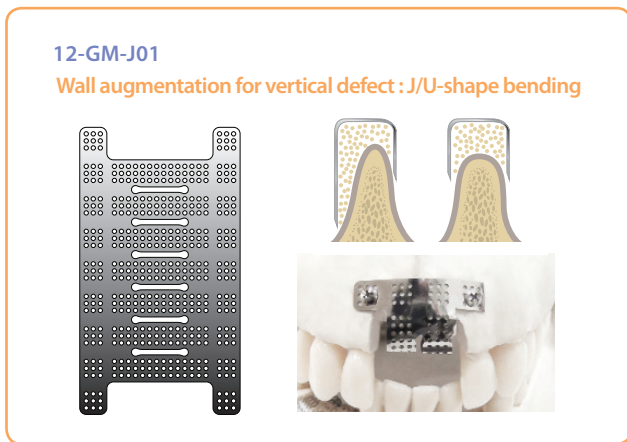
Horizontal Smooth Bending Mesh

Enables horizontal/vertical bone volume augmentation of implants site for guided bone regeneration.

Its extra thin thickness and pre-cut design offer excellent flexibility and easier shaping.

Doctors can utilize this for multiple array of teeth cases, and also can fulfill better bone formation and spatial retention for stable implant.

* Note : Fixation Hole Mesh is intended to be used in conjunction with a dental implant.



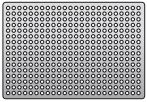
Unit : (mm)

Code	Size	Thickness	Pore diameter	Color
12-GM-J01	41 x 21.9	0.15	Ø0.8	Silver
12-GM-L01	53 x 29			

Mesh Plate

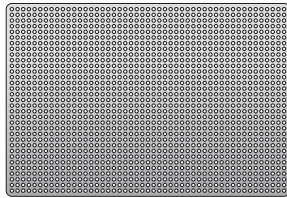
Mesh Plate can be cut to size depending on surgical needs.

12-GM-001-01
12-GM-001-02



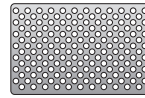
Size : 37x25mm

12-GM-002-01
12-GM-002-02



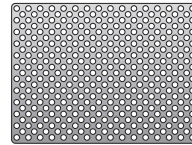
Size : 75x51mm

12-ME-001-01
12-ME-001-02



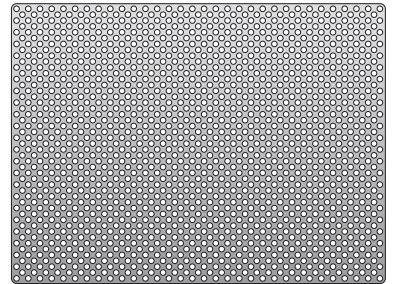
37x24mm

12-ME-002-01
12-ME-002-02



49x37mm

12-ME-003-01
12-ME-003-02



99x74mm

Pore diameter: Ø0.8mm
Suffix -01: Thickness 0.1mm
Suffix -02: Thickness 0.2mm

Pore diameter: Ø1.48~ 1.88mm
Suffix -01: Thickness 0.1mm
Suffix -02: Thickness 0.2mm

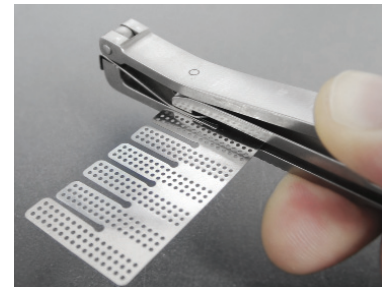
Instrument



111-010
Screwdriver Handle



112-083
Screw block

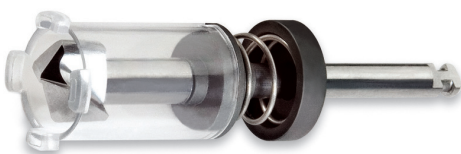


111-048
Mesh puncher

Place a mesh at the tip of the Mesh Puncher, and grab the handles to make a hole in the desired spot.
Note: Punching Diameter :1.5mm

Bonesier

Bone collector to harvest autograft bone for filling defect bone.
Surgeons can harvest 0.25cc bone or more with only 2~3 times stroke with the Bonesier.
Its transparent cap let doctors visually check the accumulated bone amount.



BCS-001
Blade: 1Pcs + Cap : 3Pcs



Top Graft
Blade: 1Pcs + Cap : 8Pcs





JEIL MEDICAL CORPORATION

702-703-704-705-706-804-805-807-812-ho, 55, Digital-ro 34-gil, Guro-gu, Seoul, 152-728, Korea
T 82.2.850.3504 F 82.2.850.3537 E global@jeilmed.co.kr W www.jeilmed.co.kr